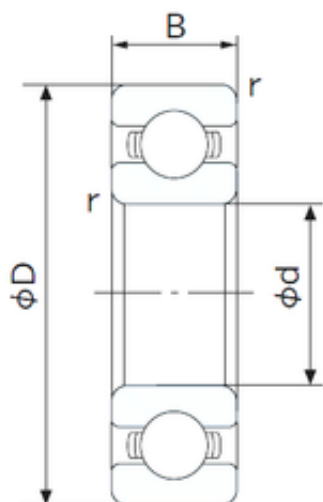




# NTN BEARING USA CORP.



NTN Timken NSK NACHI Koyo SKF 6000  
6001 6002 6003 6004 6005 Open Zz 2RS Ball  
Bearing for Motorcycle/Engine/Electric  
Motor/Pump/Power Generator

Bearing No. 6000

6000 Bearing 2D drawings and 3D CAD models

|                               |                  |
|-------------------------------|------------------|
| Size                          | 10x26x8 mm       |
| Bore Diameter                 | 10 mm            |
| Outer Diameter                | 26 mm            |
| Width                         | 8 mm             |
| d                             | 10 mm            |
| D                             | 26 mm            |
| B                             | 8 mm             |
| C                             | 8 mm             |
| r min.                        | 0.3 mm           |
| da min.                       | 12 mm            |
| Da max.                       | 24 mm            |
| ra max.                       | 0.3 mm           |
| Weight                        | 0.019 Kg         |
| Basic dynamic load rating (C) | 4,55 kN          |
| Basic static load rating (C0) | 1,97 kN          |
| (Grease) Lubrication Speed    | 30000 r/min      |
| Enclosure                     | Open             |
| Bore Type                     | Cylindrical Bore |
| Configuration                 | Single Row       |
| Bore Size                     | 10 mm            |
| Outside Diameter              | 26 mm            |
| Width                         | 8 mm             |
| Fillet Radius/Chamfer         | 0.3 mm           |
|                               |                  |



## NTN BEARING USA CORP.

|                         |                   |
|-------------------------|-------------------|
| Dynamic Load Rating     | 4,550 N           |
| Static Load Rating      | 1,970 N           |
| Limiting Speed - Grease | 30,000 rpm        |
| Limiting Speed - Oil    | 36,000 rpm        |
| Factor $f_0$            | 12.4              |
| Radial Clearance        | 0.002 to 0.013 mm |
| da (min)                | 12 mm             |
| Da (max)                | 24 mm             |
| ra (max)                | 0.3 mm            |